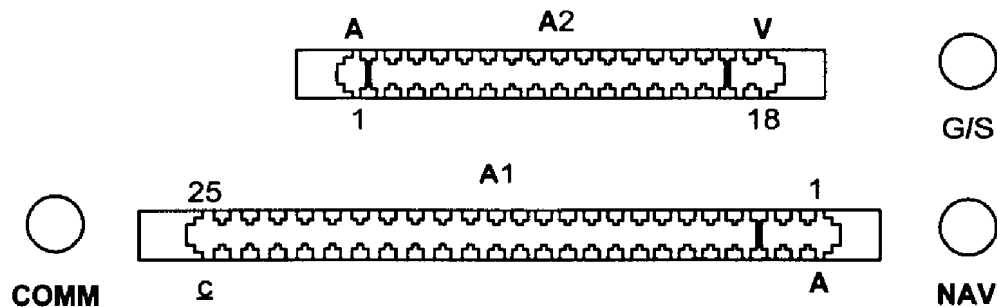


NAV/COMM

King  
**KX155A/165A A1**

For Connector A2 KX155A see K-120; KX165A A2 see K-90



**A1**

Circuit	Pin #	Notes
+ 14 VDC A/C POWER IN.....	14	Note 1
+ 14 VDC A/C POWER IN.....	R	Note 1
+ 28 VDC A/C POWER IN.....	13	Note 1
+ 28 VDC A/C POWER IN.....	P	Note 1
A/C GROUND .....	S	
A/C GROUND.....	15	
AUDIO ALERT.....	22	
CHANNEL REMOTE INCREMENT.....	a	
CLOCK BUS.....	3	
COM DETECTED AUDIO.....	1	
COMM AUDIO HI .....	9	
COMM AUDIO LOW.....	K	
COMM MIC AUDIO .....	2	
COMM MIC KEY.....	6	
COMM REMOTED XFR .....	23	
DATA BUS.....	5	
DME COMMON.....	D	
ILS ENERGIZE.....	8	
INTERCOM MIC.....	B	

(Continued)  
 Page K-119

For familiarization only. Consult the manufacturers current data.

*(KX155A/165A Continued)*

LIGHTING 14V .....	24	
LIGHTING 28V/LO .....	25	
NAV AUDIO HI .....	10	
NAV AUDIO LOW .....	L	
NAV IF AGC (UNUSED IN A/C INSTALL).....	c	
OBI CLOCK .....	E	Note 2
OBI DATA .....	C	Note 2
OBI SYNC.....	4	Note 2
RNAV MODE .....	A	
RNAV/CHAN REQUEST .....	F	
SWITCHED POWER OUT .....	12	
SWITCHED POWER OUT .....	N	
TEST (UNUSED IN A/C INSTALL).....	7	
VOR/LOC COMPOSITE OUT .....	H	

**Notes**

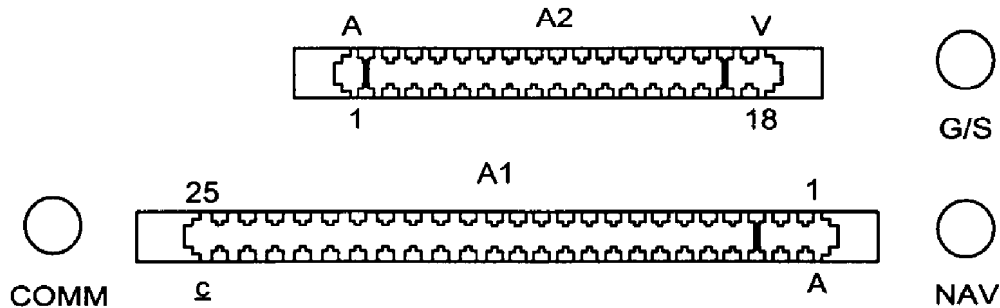
1. Use either 14 or 28 volts input.
2. KX165A only.

For familiarization only. Consult the manufacturers current data.

NAV/COMM

King  
KX155A/A2

For Connector A1 see K-118; KX165A A2 same as K-90



A2		
Circuit	Pin #	Notes
4 OHM AUDIO BRIDGE .....	M	Note 1
4 OHM AUDIO OUT 14V LO .....	B	Note 1
4 OHM AUDIO OUT 28V LO .....	11	Note 1
4 OHM AUDIO OUT .....	1	Note 1
AUX 1 AUDIO HI IN .....	H	
AUX 2 AUDIO HI IN .....	F	
AUX 2 AUDIO LOW IN .....	5	
AUX 3 AUDIO HI IN .....	4	
AUX 3 AUDIO LOW IN .....	6	
COMM AUDIO IN .....	J	
COMM MIC KEY IN .....	C	
GS - FLAG .....	14	
GS - FLAG .....	R	Note 2
GS + DOWN .....	16	
GS + DOWN .....	T	Note 2
GS + FLAG .....	17	
GS + FLAG .....	U	Note 2
GS + UP .....	15	
GS + UP .....	S	Note 2

(Continued)

For familiarization only. Consult the manufacturers current data.

*(KX155A A2 Continued)*

PHONE AUDIO OUT HI .....	D	
PHONE AUDIO OUT LO .....	A	
SUMMED AUDIO IN .....	10	Note 3
SUMMED AUDIO OUT .....	7	Note 3

**Notes**

1. 14 or 28 volts with grounded spkr, 1 to spkr, 11 to ground. 14 volts ungrounded speaker, 1 and B to spkr, 11 to M. 28 volts ungrounded spkr, 1 and 11 to spkr, B and M open.
2. Only on units with Glideslope.
3. Jumper 10 to 7.

For familiarization only. Consult the manufacturers current data.